



Peace Tree Farm

Living Soil, Sterile Water—Growing sans Chemicals

EXPO-FIHOQ

November 2018

**Simplest Talk
EVER!!**

**START Clean,
Stay Clean**

Never a Problem!!

**Well, maybe
NOT!**

**GLOBAL
Shipping!!**

Hitchhikers!

- **Xanthomonas**
- **Xylella**
- **Ralstonia**
- **EAB, Spotted Lanternfly**
- **SWD**

World Wide Travel

CIVILIANS

LOCAL Interaction

Visitors
Events
Friends, Kids

BIOSECURITY

Structural AND Cultural Controls

Ontario Vegetable Propagator

**We do it to
OURSELVES!!**

Holding Stock

Pet Plants!

Long Term Crops

Root Mealybug

Root Aphid

Pupal Insects

Diapause, Dormancy

SPORES!!

**Can be MANY
years!**

Phytophthora

Pythium

Thielaviopsis

Lives on
concrete?

WATER

Related

**Empty
Toolbox!**

Start EARLY

**BEFORE a
crop!!**

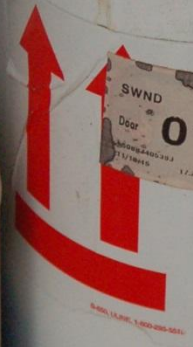


RAPID
Automatic Strapping Machine

PATENT



Conventional
Fungic



SWND
11000101
Dcor
0137
11/18/24

Bill to: LLOYD TRAVERN
PEACE TREE FARM
295 PARK DRIVE WEST
KINTNERVILLE PA 18930
BILL SENDER
(US)
FedEx
G
PKY 6508 8740 5383 18930
0622 4011 0 1000 023 90045 9 00 8508 8740 5383

Bio Foamer

PACE 49

RESIDUAL!!

**Before you
BUILD!!**

SANITATION











**If you have
Weeds, You
have
INSECTS!!**

**IT'S A MULTITUDE OF
SMALL AND LARGE
TARGETED STEPS**

**MUCH tougher
once it is inside
the GH!**

**HOW do we
keep problems
OUT?**

PROTOCOLS

Accountability!

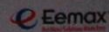
**Follow the
RULES!**

Seems so
BASIC, right?



**EMPLOYEES MUST
WASH HANDS BEFORE
RETURNING TO WORK**

This sink is for washing hands only. For all other purposes
use the water room sink.





**EMPLOYEES MUST
WASH HANDS BEFORE
RETURNING TO WORK**

This sink is for washing hands only. For all other purposes
use the water room sink.



**EVERYONE
washes!!**

**Especially the
Ag Inspector!**

Certifications!

**USDA Certified
Organic**

GAP

FSMA

**Food Safety,
but effective
first line**

**Are OUR
issues more
elemental?**

Pest and Disease

Quarantine and Exclusion!

CLEAN Sourcing

Prophylactics!

ENTRY MATS?

CARTS?
TRUCKS?

Double Door

Disease Complex

Incorporating Biologicals!

LOTS of options, FINALLY

- Cease
- Milstop
- Rootshield, Actino stuff
- Regalia---Stargus----SAR?
- Coppers
- Peroxides?
- LOTS MORE COMING FAST!!!

Water and AIR management

- **CELLULAR interface**
- **Oxygen**
- **Pathogen threshold**
- **Insect Acceptability?**
- **ENVIRONMENTAL CONTROL!!**
- **Breeding, Cultivar, Consumer**

**WATER is the
key!!**

**LIVING SOIL,
STERILE WATER!**

Hard to ADD Biology to Soil

**EASY to
REMOVE from
Water**

Soil Microbiology

INOCULANTS

Composts, Teas

Nurturing and Shelf Life!

BIOCHAR!!

FERTILITY

ORGANIC ISSUE

**MIX at time of
Use!!**

The Peace Tree Mix

- 12.5% HydraFiber, plus Yucca
- 7% Compost!
- 2 types of Peat plus Coir—AIR!!
- Rootshield+
- pH adjusted, lime, etc
- Verdanta N-Vita at potting
- TerraGrow

ALWAYS look to
build the soil and
microbial life









IRRIGATION



**KEY: Remove
Organic Matter!!**

**We are Filtering
down to 5
MICRONS**



OZONE

**Oxidize
microbes**

NO Resistance

Hyper-oxygenation

>10PPM

Dissolved O₂

**Anaerobes really
struggle!!**

**OR DO
THEY?**

U. Of Florida

Oxygen
Crucial

**NO Evidence for
Hyperoxygenation**

Advantages

- High \$\$ upfront, low ongoing
- NO resistance!
- The O2 is a key---no toxic residues
- Better Germ—5-7% claimed
- Faster turn, 2 weeks.... supposedly
- Fertilizer efficiency
- Microbial environment!!



ClearWater
TECH, LLC
CD2000P
SOLAR DESALINATOR

DANGER

CAUTION



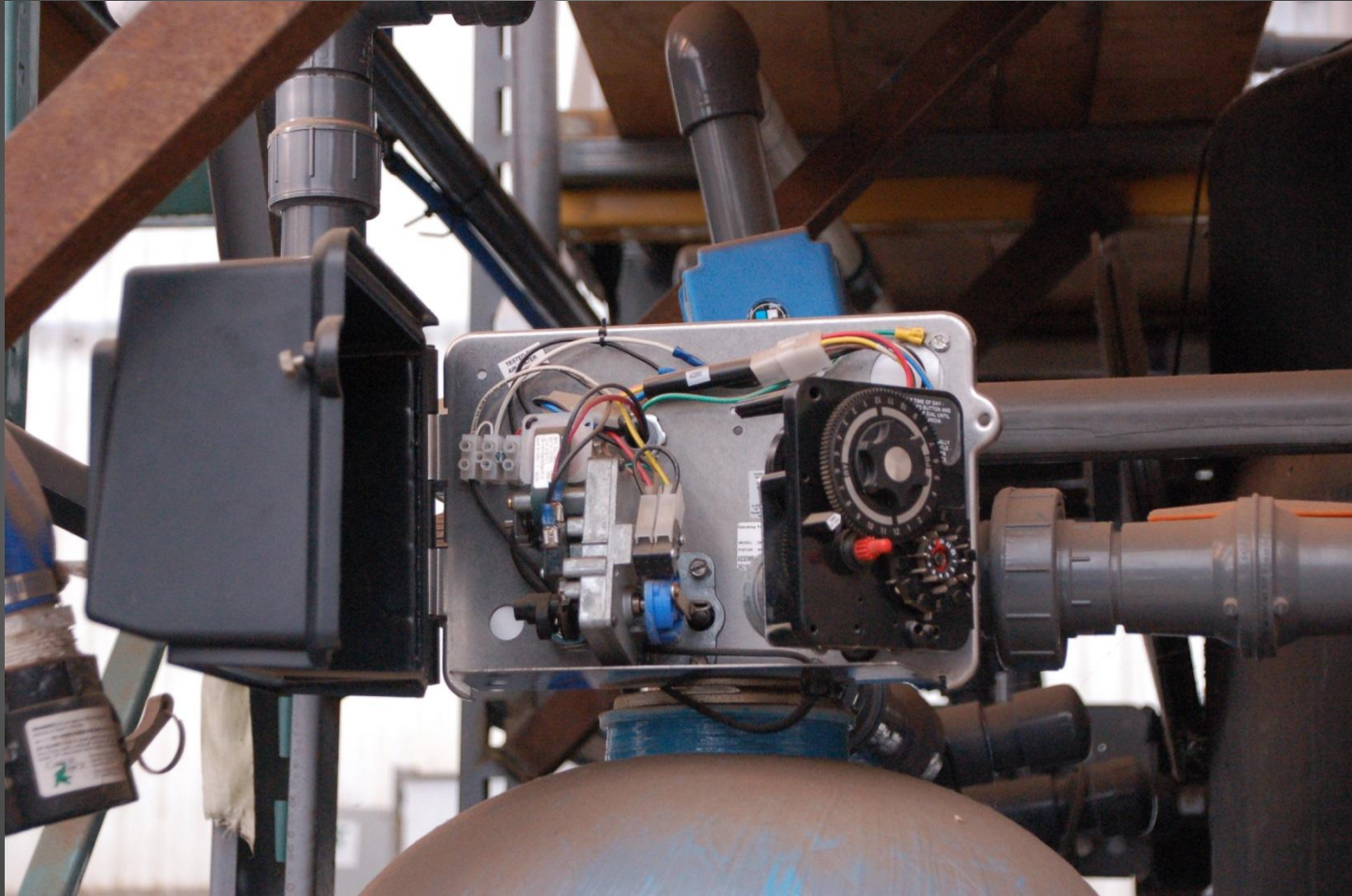
ARGUS

ARGUS
CONTROLS

MULTI-FEED NUTRIENT SYSTEM

DOSATEC

GLASS Filter



**Isolated
systems!**



**Beware the
Snake Oil
Salesmen!!**



Advanced
Treatment Technologies
Water by Design
1-855-696-6348
www.advancedtreatmenttechnologies.com

CAUTION
DO NOT OPEN THIS UNIT
UNLESS YOU ARE A QUALIFIED
ELECTRICIAN









AQUA 2000

A
G
R
I

A
G
R
I



5 AMP

5 AMP

BREAKER

LO

ON
OFF

AQUA 2000
623127
SUPERIOR AQUA
ENTERPRISES
1-800-225-0119



MODEL AQUA
110 VAC
200 VAC
EPA REG # 18193-PL001

Made With Pride
In The USA

Water Options

- Ozone
- Chlorines
- Peroxides
- Sand Filtration—slow or fast
- UV Light
- Charcoals?

Quarternary Ammonium Salts?

CAREFUL!!

**CHEMICAL-
FREE?**

Multi-cultural

**Why, That is
IMPOSSIBLE!!**

Propagation @ Peace Tree





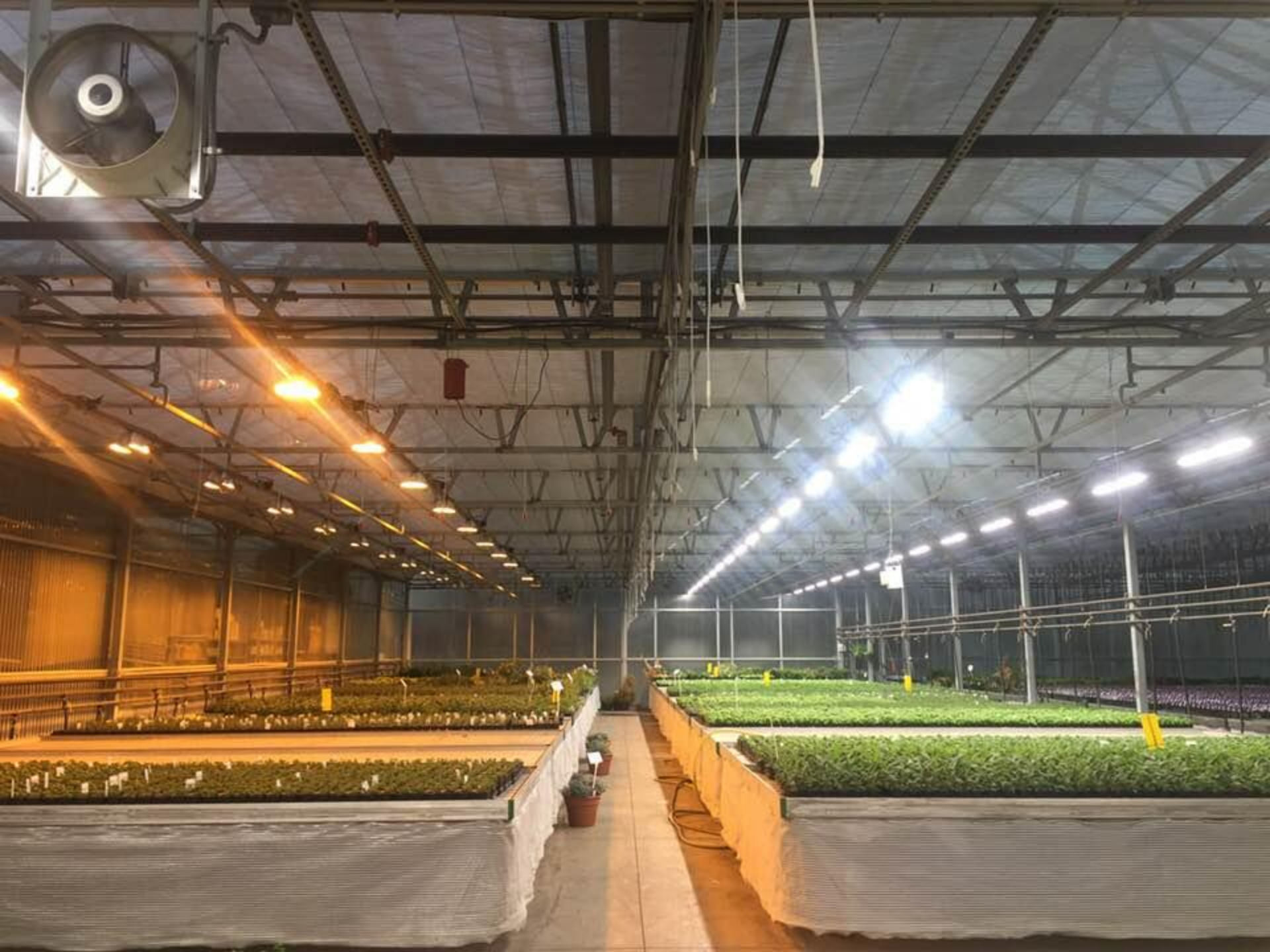


INTENSITY!!

Most INTENSIVE Part of ALL

- ENERGY!
- Technical Germ
- Optimization
- Environment-light, temp, management
- Seed storage and counts

**Lights for
Disease
Control!!!**



Basil Downy Mildew

Blue Wave!

**Prop is ALL
about
management of
the
ENVIRONMENT**

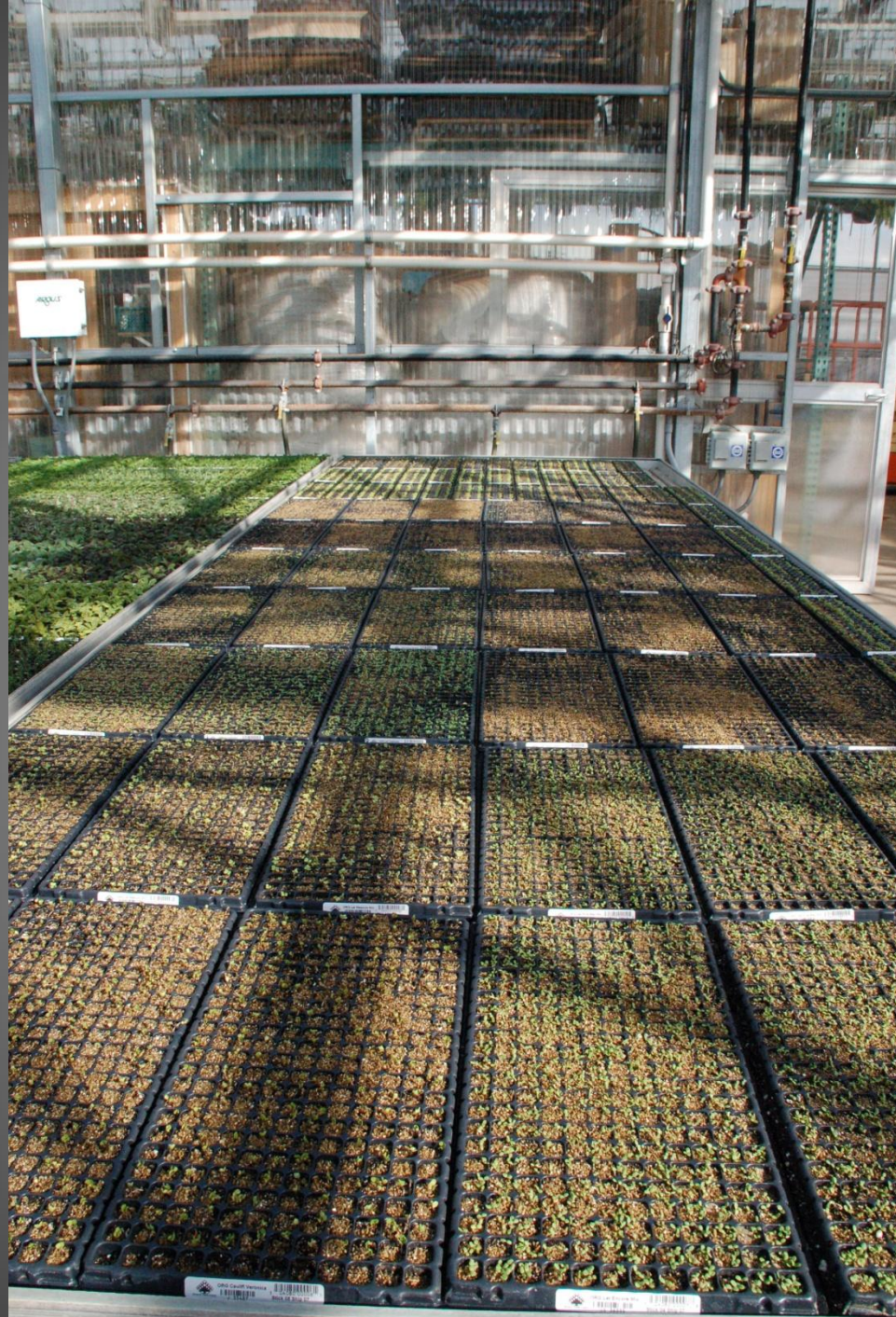
**ALL the
Environments!!**



**Particularly the
SOIL!**

**Moisture,
Oxygen, Pore
Space, Vascular
Interface**

OPTIMIZED Environment






Peace Tree Farm

ORG Let Encore Mix


JS 36335


5 04080 00007 8

Stick 04 Ship 07



Peace Tree Farm

ORG Caulifl Veronica



J 35487



5 0408

Stick 08



Leif Sebastian Seed Sales
188899119
3033 08 3112 09

Leif Sebastian Seed Sales
188899119
3033 08 3112 09

Leif Sebastian Seed Sales
188899119
3033 08 3112 09

Leif Sebastian Seed Sales
188899119
3033 08 3112 09

000001101100 P0314

314



UNIFORMITY!

BOOM SYSTEMS









ARGUS

Box 7

1000 110 90111





**Size of
Operation is
immaterial**





**It Ain't EASY
Being GREEN!!**



